

MASCHINEN-DATEN

Maschinenart	: Handhebel-Schere
Fabrikat	: HUVEMA
Typ	: HU 7 PBS
Baujahr	: 2008
Steuerungsart	: konventionell
Steuerung	:
Lagerort	: Lager Krefeld
Herkunftsland	: Niederlande
Lieferzeit	: Sofort
Frachtbasis	: ab Lager, frei verladen LKW
Preis	: auf Anfrage



TECHNISCHE DATEN

Blechstärke	10 mm
Messerlänge	175 mm
Flachmaterial	90 x 14
Rundmaterial	22 mm
Winkelstahl	60 x 7 mm
Maschinengewicht ca.	100 kg

TECHNISCHE BESCHREIBUNG

*ungebrauchte Handhebelmaschine,
kombinierte Bleischere und Profilstahlschere,*

VIDEO-LINKS

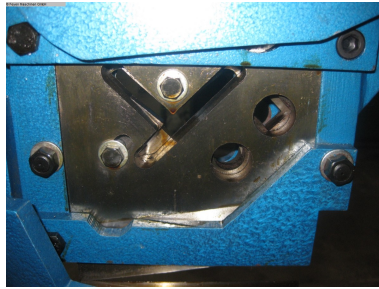
WEB-LINK

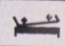
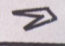
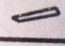
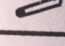
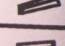
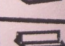
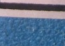
<http://mhp.logotech.de/hpm/v7/Datenblatt/datenblatt.php?machineno=1053-003151>

Handhebel-Schere
HUVEMA
HU 7 PBS
Lagernummer :1053-003151



MASCHINEN-BILDER



Item	Capacity
 (in)	7"
 (mm)	10
 (mm)	90 x 14
 (mm)	22
 (mm)	20
 (mm)	60 x 7
 (mm)	60 x 7

